



GSM Gateway ISDN BRI Interface

DIAL-122

DIAL-122 is a brand new small-sized GSM Gateway that can be connected to a PBX ISDN BRI trunk interface in order to eliminate mobile cross-network fees: now the users can call mobile phones at low cost as **DIAL-122** securely transforms fixed-to-mobile in mobile-to-mobile calls, exploiting its **TWO** Dual-Band GSM Engine.

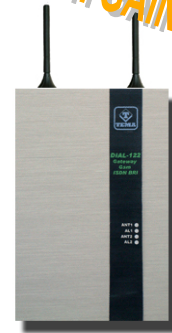
DIAL-122 allows to connect independently the double GSM Engine with the two channels of the ISDN BRI interface. In the **TERMINAL** connection, **DIAL-122** allows to select the carrier to use when routing the incoming calls from PBX extensions through the GSM network. Choosing the right carrier depending on the caller may lead to effective cost reduction. In the **DROP INSERT** connection, also the PSTN network may be included in the routing alternatives.

Moreover, the **Smart Callback** service allows the user who calls back to be automatically diverted to extension from which the original call was made.

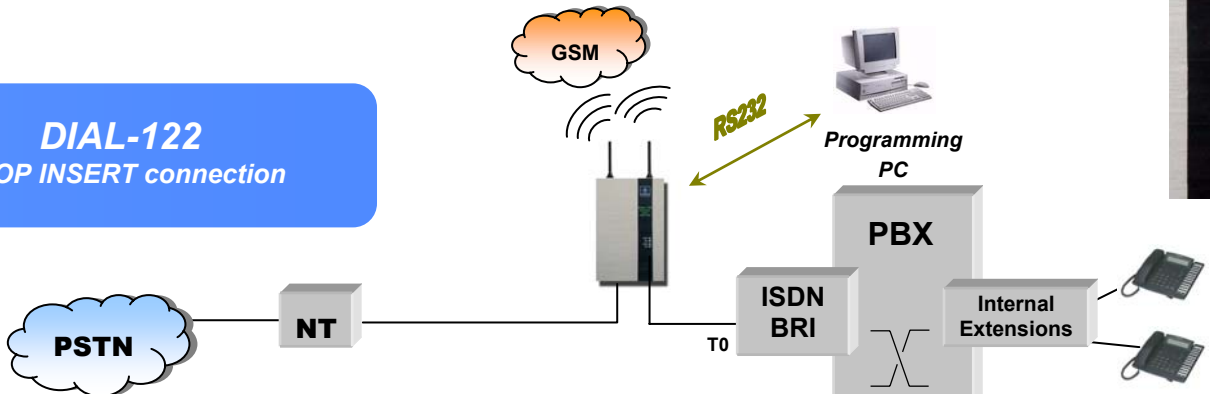
For incoming calls directed to one of the GSM Engines, **DIAL-122** generates the call towards the PBX

DIAL-122 is fully programmable by PC through RS-232 serial port with the configuration software provided.

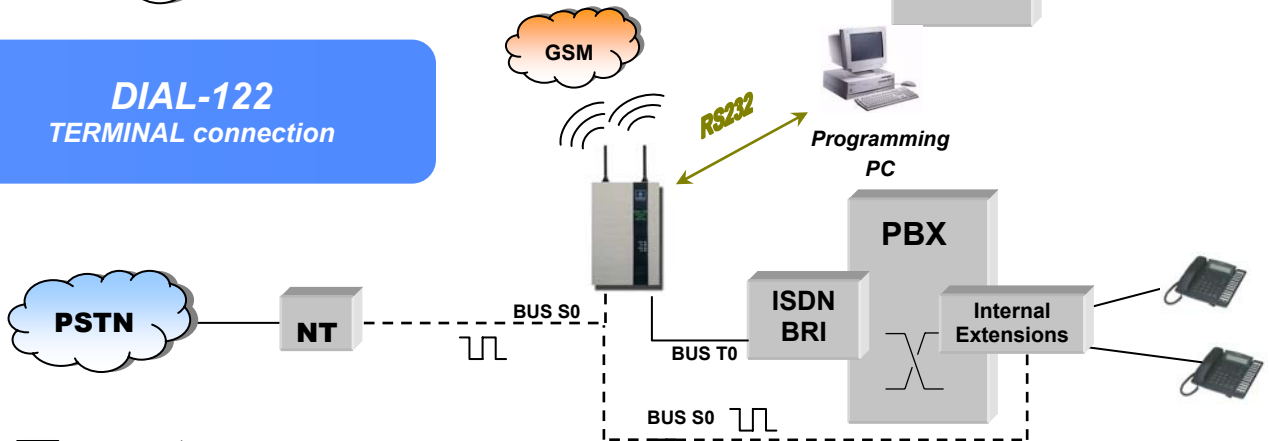
**TWO GSM ENGINE
TWO HIGH GAIN ANTENNA**



DIAL-122 DROP INSERT connection



DIAL-122 TERMINAL connection



Features

- Serial connection to PBX through Interface S0 point-to-point or point-to-multipoint or terminal
- Compatible with 1.8V to 3V SIM CARD
- "Smart Callback" service for the automated diversion of the call back to the extension
- Automated Routing of the call on the favorite mobile channel depending on the prefix dialed
- Possibility of avoiding CLI sending on GSM network (CLIR)
- Possibility of call barring depending on the prefix dialed



Main Features

- ◆ Two built-in GSM Dual-Band 900/1800Mhz engines.
- ◆ High voice quality - loudness setting in TX/RX independently on both GSM channels.
- ◆ Plug & Play installation.
- ◆ Two High Gain Antenna System (6 dB).
- ◆ Programmable via PC serial port RS-232.
- ◆ Incoming / outgoing call barring separately on each module.
- ◆ Possibility of avoiding sending GSM SIM identity (CLI).
- ◆ “Smart Callback” service for the automated diversion of the call back to the extension.
- ◆ Possibility of sending INFO messages on ISDN D channel for accounting systems (for PBX equipped with this feature only).

Technical Features

◆ **Radiofrequency Section**

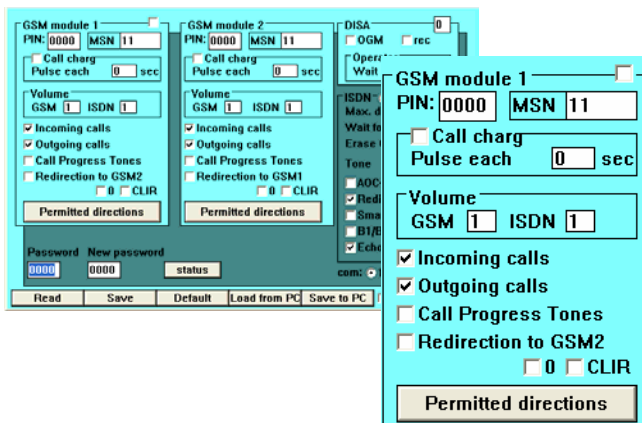
Built-In GSM module : Dual Band (900/1800Mhz)
 SIM Card : Plug-in, 1,8V o 3V, small
 Transmitter Power : 2W/900Mhz-1W/1800Mhz
 Receiver Sensitivity : > - 100 dBm
 Antenna / Frequency : 50 Ohm, connector FME, 900/1800MHz, gain 6 dB
 Antenna cable length : 3 mt.

◆ **ISDN Section**

ISDN Connections: : RJ-45 - PBX side and NT side
 Impedance : 100 Ω
 ISDN Protocols : Euro-ISDN
 ITU-T I.423 ITU-T Q.921
 ITU-T Q.931
 Interface So : point-to-point or point-to-multipoint
 Available Services : CLIP, CLIR, AOC-D, AOC-E

◆ **General Features**

Power supply : 230VAC/50Hz - 8-12VDC/15VA
 Operating Temp. : +5°C - +40°C
 Max. Rel. Umidity : up to 80% non condensing
 Weight : circa 1150gr. (packaged with power supply)
 Dimensions (LxHxW) : 230 X 140 x 65 mm



Provided with:
Power Supply
High Gain Antennas + Cable

The manufacturer reserves the right to change product characteristic without notice

